

Festa Smart Switch | Datasheet

Festa FS352GP

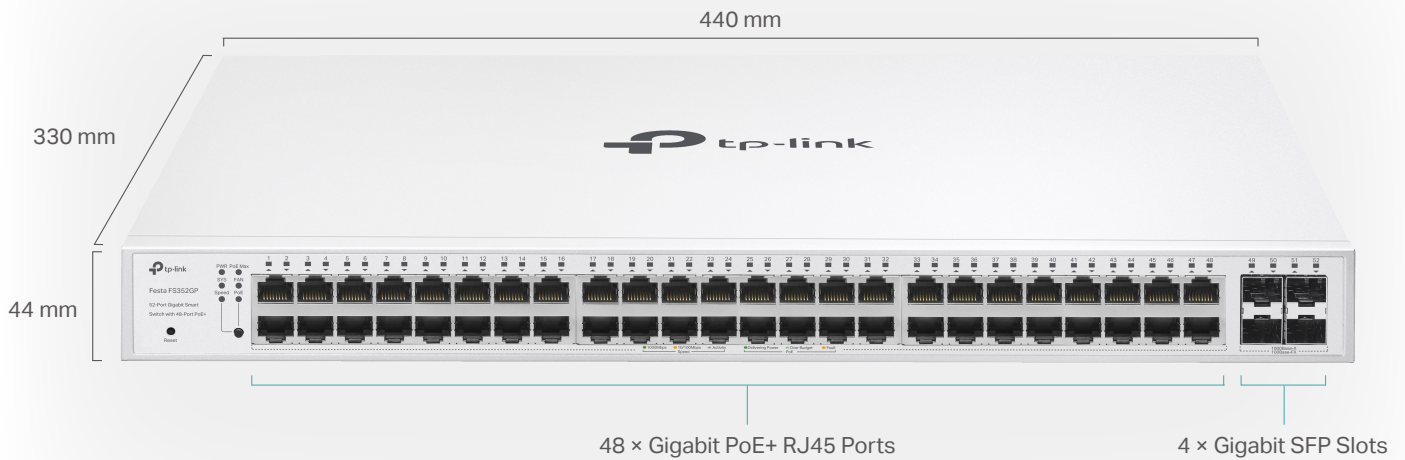
52-Port Gigabit Smart Switch with 48-Port PoE+



Highlights

- 48× Gigabit 802.3af/at PoE+ ports and 4× Gigabit SFP slots
- 384 W total PoE budget with up to 30 W PoE output per port*
- Free cloud centralized management via the Festa app or the web
- Easy setup and use
- Zero-Touch Provisioning (ZTP) and Self-Organizing Network (SON)
- Complete SMB-Lite Festa Ecosystem, ideal for small businesses, home offices, cafes, retail, prosumers, advanced consumers, and large households
- Static Routing, VLAN, ACL, and IGMP Snooping
- Elegant metal casing and rack-mountable design

Product Pictures



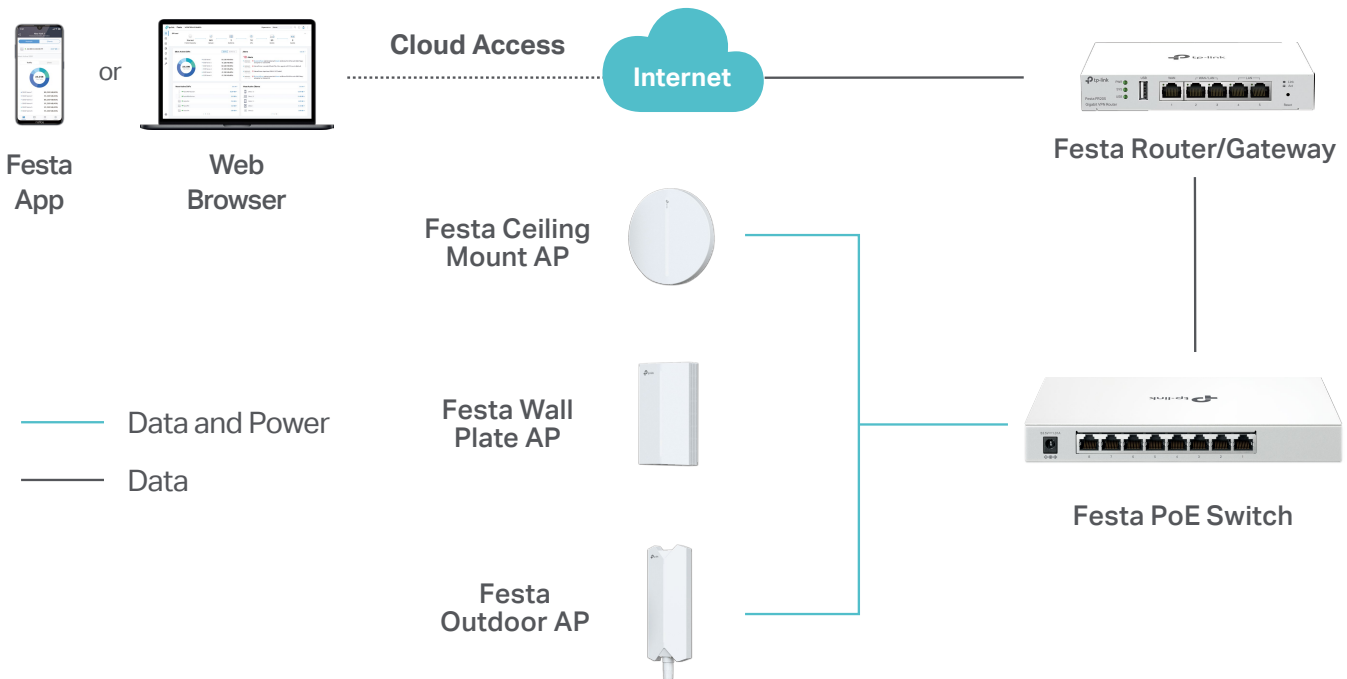
Festa Solution

Festa unifies APs, switches, and routers/gateways for full cloud-based management, offering an easy, effective, and reliable business-level network controlled via app or web. Perfect for small businesses, home offices, and cafes.

Easy Setup and Use

Free Cloud Centralized Management[†]

Easy Maintenance



Specifications

Hardware Features & Performance

Model		Festa FS352GP
General	Interface	48 10/100/1000Mbps RJ45 ports 4 Gigabit SFP Slots
	Flash	32 MB
	DRAM	256 MB
	Port Standard	IEEE 802.3i:10BASE-T Ethernet; IEEE 802.3u:100BASE-X Fast Ethernet; IEEE 802.3ab:1000BASE-T Gigabit Ethernet IEEE 802.3z:1000BASE-X Gigabit Ethernet (Optical fiber)
PoE	PoE Standard	802.3af/at
	PoE Ports	Port 1-48, up to 30 W per port
	PoE Power Budget	384 W
Performance	Switching Capacity	104 Gbps
	Packet Forwarding Rate	77.37 Mpps
	MAC Address Table	16 K
	Packet Buffer	12 Mbit
	Transmission Method	Store and Forward
	Number of IP Interfaces	16
	Number of Static Routes	32 (IPv4, IPv6)
	Jumbo Frame	9 KB
Physical & Environment	Power Supply	100-240V AC, 50/60 Hz
	Max Power Consumption	472.61 W (110 V/60 Hz) (with 384 W PD connected)
	Max Heat Dissipation	1606.87 BTU/hr (110 V/60 Hz) (with 384 W PD connected)
	Standby Power Consumption	23.11 W (110V/60 Hz)
	Dimensions (W x D x H)	17.3 × 13.0 × 1.7 in (440 × 330 × 44 mm)
	Fan Quantity	3
	Installation	Rackmount
	Operating Temperature	0 °C to 40 °C (32 °F to 104 °F)
	Storage Temperature	-40 °C to 70 °C (-40 °F to 158 °F)
	Operation Humidity	10% to 90% RH, non-condensing
	Storage Humidity	5% to 90% RH, non-condensing
Certification	CE, FCC, RoHS	

Software Features

Model	Festa FS352GP		
Festa Cloud-Based Controller Management	Device Config	Port Config	<ul style="list-style-type: none"> • Static LAG • LACP(802.3ad) • Link Speed • Port Isolation • Flow Control • EEE • Loopback Control <ul style="list-style-type: none"> - Loopback Detection Port Based - Loopback Detection VLAN Based - Spanning Tree • LLDP-MED • Bandwidth Control <ul style="list-style-type: none"> - Rate Limit - Storm Control • DHCP L2 Relay
		General	<ul style="list-style-type: none"> • LED on/off • Jumbo Frame • Hash Algorithm
		VLAN Interface	<ul style="list-style-type: none"> • Management VLAN • IP Address(Static/DHCP) • DHCP Server • DHCP Relay • IPv6 Address(Static/DHCP)
		Services	<ul style="list-style-type: none"> • Loopback Detection <ul style="list-style-type: none"> - Enable/Disable • Spanning Tree <ul style="list-style-type: none"> - STP/RSTP • SNMP Location • SNMP Contact
		Static Route	
	Site	<ul style="list-style-type: none"> • NTP • DST • LLDP 	
	LAN	<ul style="list-style-type: none"> • IGMP Snooping • MLD Snooping • DHCP Server • DHCP Guard <ul style="list-style-type: none"> - DHCPv4 Legal Server - DHCPv6 Legal Server • DHCP L2 Relay 	

Software Features

Model	Festa FS352GP		
Festa Cloud-Based Controller Management	Network Security	ACL	<ul style="list-style-type: none"> • Time-Range - Time Slice - Week Time-Range - Absolute Time-Range • Combined ACL - Source MAC(Subnet Mask) - Destination MAC(Subnet Mask) - VLAN ID - EtherType - Source IP(Subnet Mask) - Destination IP(Subnet Mask) - IP Protocol - TCP/UDP Source Port - TCP/UDP Destination Port • IPv6 ACL • Rule Operation - Permit/Deny • Binding - Port Binding - VLAN Binding
	Services	SNMP	<ul style="list-style-type: none"> • SNMP Version
		SSH	<ul style="list-style-type: none"> • SSH Login - Enabled/Disabled • SSH Server Port • Layer 3 Accessibility - Enabled/Disabled
Standalone	System	System Information	System Summary
		System tools	Firmware Upgrade System Reboot System Reset
		Access Security	<ul style="list-style-type: none"> • SSH Config - v1/v2 Enable/Disable - Encryption Algorithm - Data Integrity Algorithm - Port Setting - IPv6 SSH

Ordering Information

Host Switch

Model	Description
Festa FS352GP	52-Port Gigabit Smart Switch with 48-Port PoE+

SFP Modules

Model	Description
SM311LS	Gigabit SFP module, Single-mode, LC interface, Up to 20km distance
SM311LM	Gigabit SFP module, Multi-mode, LC interface, Up to 550m distance
SM321A	Gigabit WDM Bi-Directional SFP Module, single-mode, LC connector, TX: 1550 nm/RX: 1310 nm, 20 km
SM321A-2	Gigabit WDM Bi-Directional SFP Module, single-mode, LC connector, TX: 1550 nm/RX: 1310 nm, 2 km
SM321B	Gigabit WDM Bi-Directional SFP Module, single-mode, LC connector, TX: 1310 nm/RX: 1550 nm, 20 km
SM321B-2	Gigabit WDM Bi-Directional SFP Module, single-mode, LC connector, TX: 1310 nm/RX: 1550 nm, 2 km

RJ45 SFP Modules

Model	Description
SM331T	1000BASE-T RJ45 SFP Module

MC Series Media Converter

Model	Description
MC210CS	Gigabit Single-Mode Media Converter, up to 20 km, chassis mountable
MC200CM	Gigabit Multi-Mode Media Converter, up to 550 m, chassis mountable
MC220L	Gigabit SFP Media Converter, chassis mountable
MC1400	14-slot power supply chassis for TP-LINK MC Series Media Converter, 19-inch rack-mountable

FC Series Media Converter

Model	Description
FC111A-20	100Mbps Single-Mode WDM Media Converter, up to 20 km, TX:1550nm, RX:1310nm, chassis mountable
FC111B-20	100Mbps Single-Mode WDM Media Converter, up to 20 km, TX:1310nm, RX:1550nm, chassis mountable
FC311A-2	Gigabit Single-Mode WDM Media Converter, up to 2 km, TX:1550nm, RX:1310nm, chassis mountable
FC311B-2	Gigabit Single-Mode WDM Media Converter, up to 2 km, TX:1310nm, RX:1550nm, chassis mountable
FC311A-20	Gigabit Single-Mode WDM Media Converter, up to 20 km, TX:1550nm, RX:1310nm, chassis mountable
FC311B-20	Gigabit Single-Mode WDM Media Converter, up to 20 km, TX:1310nm, RX:1550nm, chassis mountable
FC1400	14-slot power supply chassis for TP-LINK FC Series Media Converter, 19-inch rack-mountable

Disclaimers:

†Festa currently offers free cloud access for centralized management and reserves the right to apply fees in the future.

*PoE budget calculations are based on laboratory testing. The actual PoE power budget is not guaranteed and will vary due to client limitations and environmental factors.

Specifications are subject to change without notice. All brands and product names are trademarks or registered trademarks of their respective holders. © 2024 TP-Link